



Impulse Heat Sealer

5ZZ51G
KF-100H

4LT36G
KF-200H

4LT28G
KF-300H

5ZZ40G
KF-400H

2LED7G
KF-520H

2LED9G
KF-200HC

13F540
KF-200HC10

5ZZ35G
KF-300HC

2LEE1G
KF-400HC

2LEE2G
KF-500HC

Operating Instructions and Parts Manual

Please read and save these instructions. Read carefully before attempting to operate or maintain the product described. Protect yourself and others by observing all safety information. Failure to comply with instructions could result in personal injury and/or property damage! Retain instructions for future reference.

Description

Impulse heat sealers are a compact and convenient way to seal most sizes of polypropylene and polyethylene bags.

Warnings

- Don't use in flammable or combustible environments.
- Do not use in damp or wet environments.
- To reduce the risk of electric shock, disconnect the unit from the power circuit before servicing or replacing the heating element.

Setup

- Place sealer on a dry, level surface free of obstructions and plug into a dedicated 110V circuit.
- For models with a cutting knife, carefully remove the protective wax coating from the cutting blade prior to use.

Operation

NOTE: Before each use, check the Teflon® cloth and silicone rubber bar. Replace if worn or damaged.

NOTE: Consult Figure 1 below for initial sealing timer setting suggestions. Sealing time will vary depending on bag thickness and type.

NOTE: Adjust the sealing timer to the lowest setting that produces a good seal. Too high a setting will produce a poor seal and shorten heating element life.

1. Place the bag in the sealer and press firmly down on the bar.
2. Continue to apply pressure for one or two seconds after the red light has gone out.
3. For cutting knife models, slide the cutting blade across the top of the sealing arm.
4. Remove Bag.

A uniform, fully-welded seal should be produced.

Operating Instructions and Parts Manual

Operation (continued)

NOTE: If seal is damaged, incomplete, or not uniform, or if the bag is sticking to the sealer, refer to troubleshooting section of this manual.

NOTE: Power is only consumed when the red light is on.

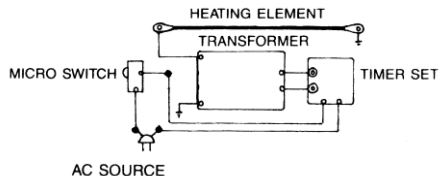
Figure 1

Timer setting	Polyethylene	Polypropylene or high heat film
1	< .06mm	
2	< .10mm	
3	< .14mm	
4	< .20mm	< .03mm
5		< .044mm
6		< .06mm
7		< .08mm

Specifications

		Watts	Length	Cutter
5ZZ51G	KF-100H	160	4"	No
4LT36G	KF-200H	260	8"	No
4LT28G	KF-300H	380	12"	No
5ZZ40G	KF-400H	600	16"	No
2LED7G	KF-520H	700	20"	No
2LED9G	KF-200HC	260	8"	Yes
13F540	KF-200HC10	1000	8"	Yes
5ZZ35G	KF-300HC	380	12"	Yes
2LEE1G	KF-400HC	600	16"	Yes
2LEE2G	KF-500HC	700	20"	Yes

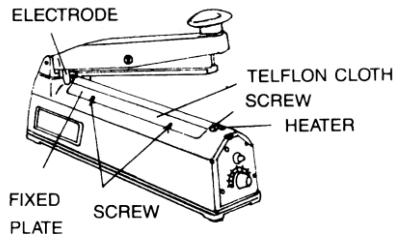
Circuit Diagram



Operating Instructions and Parts Manual

Maintenance

- Keep the upper and lower surfaces of the heating area clean.
- Replace worn or damaged components as needed.



To replace heating element:

1. Disconnect the unit from the supply circuit.
2. Remove the plates on either side of the heating element and remove the Teflon cloth.

Maintenance (continued)

3. Unscrew the heating element at each end.
Replace with new element, taking care not to crimp the wire.
4. Secure new Teflon cloth in place with screws.

NOTE: Use only original manufacturer heating elements and Teflon cloth.

Troubleshooting

Symptom	Cause	Solution
Sealing lamp doesn't light and element doesn't heat.	<ul style="list-style-type: none">▪ Disconnected plug.▪ AC circuit disconnected.▪ Damaged sealer power cord.	<ul style="list-style-type: none">▪ Plug in the sealer.▪ Repair the AC circuit.▪ Replace sealer power cord.
Sealing lamp lights, but element doesn't heat.	<ul style="list-style-type: none">▪ Damaged or worn heating element.▪ Damaged micro switch.	<ul style="list-style-type: none">▪ Replace heating element.▪ Replace micro switch.

Operating Instructions and Parts Manual

Troubleshooting (continued)

Symptom	Cause	Solution
Sealing lamp lights, but Teflon cloth overheats.	<ul style="list-style-type: none">▪ Timer malfunction.▪ Timer is set too high.	<ul style="list-style-type: none">▪ Replace timer and Teflon.▪ Reduce heating time.
Heating wire suddenly breaks.	<ul style="list-style-type: none">▪ Operation is too frequent with insufficient cooling time.▪ Damaged Teflon tape.	<ul style="list-style-type: none">▪ Allow 2 seconds between each sealing operation.▪ Do not exceed 1000 seals per day.▪ Replace Teflon tape.
Bag sticks to silicone rubber or heating element	<ul style="list-style-type: none">▪ Sealing time is too long.▪ Damaged rubber or Teflon tape.	<ul style="list-style-type: none">▪ Decrease timer and try again.▪ Replace rubber or Teflon tape.
Seal is broken or damaged	<ul style="list-style-type: none">▪ Damaged Teflon tape.▪ Sealing time is too long.	<ul style="list-style-type: none">▪ Replace Teflon tape.▪ Decrease timer and try again.

Troubleshooting (continued)

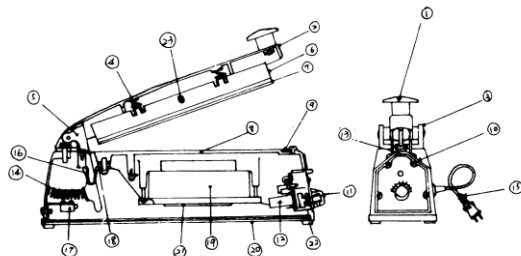
Symptom	Cause	Solution
Partial seal	<ul style="list-style-type: none">▪ Damaged Teflon tape.▪ Sealing time is too short.▪ Seal is not being completed properly.	<ul style="list-style-type: none">▪ Replace Teflon tape.▪ Increase timer and try again.▪ Continue to apply pressure to the bar 1-2 seconds after the red light has gone out.

Operating Instructions and Parts Manual

Replacement Parts

		Maintenance Kit Element & Teflon	Silicone Strip	Timer	Micro switch	Blade
Replacement Part Number						
5ZZ51G	KF-100H	5ZZ52G	MH2LED701G	MH2LED702G	MH2LED703G	-
4LT36G	KF-200H	5ZZ56G	MH2LED701G	MH2LED702G	MH2LED703G	-
4LT28G	KF-300H	5ZZ38G	MH2LED701G	MH2LED702G	MH2LED703G	-
5ZZ40G	KF-400H	5ZZ42G	MH2LED701G	MH2LED702G	MH2LED703G	-
2LED7G	KF-520H	2LEE4G	MH2LED701G	MH2LED702G	MH2LED703G	-
2LED9G	KF-200HC	2LEE6G	MH2LED701G	MH2LED902G	MH2LED703G	MH2LED904G
13F540	KF-200HC10	13F541	MH2LED901G	MH13F54002G	MH2LED703G	MH2LED904G
5ZZ35G	KF-300HC	2VAE2G	MH2LED901G	MH2LED902G	MH2LED703G	MH2LED904G
2LEE1G	KF-400HC	2LEE7G	MH2LED901G	MH2LED902G	MH2LED703G	MH2LED904G
2LEE2G	KF-500HC	2LEE8G	MH2LED901G	MH2LED902G	MH2LED703G	MH2LED904G

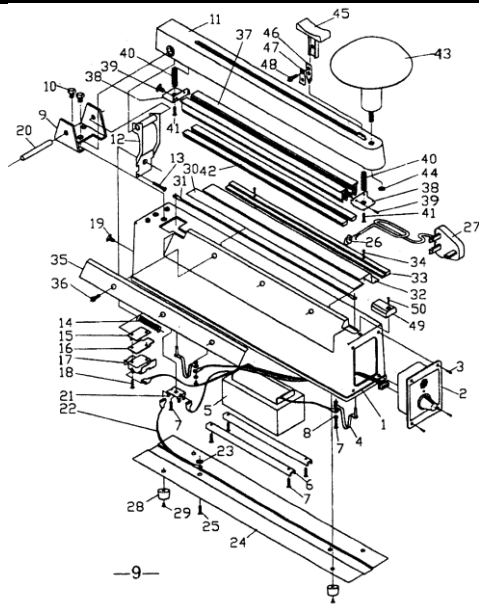
Operating Instructions and Parts Manual



Item	Description	Item	Description
1	Handle Knob	12	Wire Connector
2	Arm	13*	Insulated Cloth
3	Hinge Bracket	14	Bracket Spring
4	Coil Spring	15	Power Cord
5	Microswitch Bracket	16	Heating Element Pin
6	Sealing Plate	17*	Micro Switch
7*	Silicone Rubber	18	Output Terminal
8*	Teflon Cloth	19	Transformer
9*	Heating Element	20	Base Plate
10	Fixed Plate	21	Transformer Support
11*	Timer	22	Rubber Foot

* - Denotes that the part is available as a replacement part.

Operating Instructions and Parts Manual



Item	Description	Item	Description
1	Body	26	Bushing
2*	Timer	27	Power Cord
3	Screw	28	Rubber Foot
4	Bowspring	29	Rubber Foot Screw
5	Transformer	30*	Lower Teflon(Adhesive)
6	Transformer Bracket	31*	Heating Element
7	Screw	32*	Upper Teflon
8	Plastic Washer	33	Teflon Plate
9	Hinge Bracket	34	Teflon Plate Screw
10	Screw	35	Teflon Fixed Plate
11	Arm	36	Fixed Plate Screw
12	Arm Operating Bracket	37	Sealing Bar
13	Switch Adjusting Screw	38	Sealing Bar Bracket
14	Arm Return Spring	39	Bracket Screw
15	Microswitch Bracket	40	Sealing Bar Spring
16	Insulated Plate	41	Return Spring Screw
17*	Microswitch	42*	Silicone Rubber Pad
18	Microswitch Screw	43	Handle Knob
19	Screw	44	Washer
20	Hinge Pin	45	Blade Holder
21	Wire Connector	46*	Cutter Blade
22	Ground Wire	47	Blade Plate
23	Ground Wire Washer	48	Blade Screw/Nut
24	Base Plate	49	Heating Element Cover
25	Ground Wire Screw	50	Cover Screw

* - Denotes that the part is available as a replacement part.