



# Total Solutions



# Global Series Signaling Platform

## Global Series Strobe

- 7 lens color options
- High-intensity xenon strobe tube operated at 21J
- 60 FPM
- Non-metallic, corrosion-resistant design
- IP66 enclosure

Federal Signal Model	Item Number	Description
G-STR-024-D-A	46KT72	24VDC, Ex d Surface Mount, Amber
G-STR-024-D-B	46KT73	24VDC, Ex d Surface Mount, Blue
G-STR-024-D-C	46KT74	24VDC, Ex d Surface Mount, Clear
G-STR-024-D-G	46KT75	24VDC, Ex d Surface Mount, Green
G-STR-024-D-M	46KT76	24VDC, Ex d Surface Mount, Magenta
G-STR-024-D-Y	46KT77	24VDC, Ex d Surface Mount, Yellow
G-STR-024-D-R	46KT78	24VDC, Ex d Surface Mount, Red
G-STR-120-D-A	46KT79	120VAC, Ex d Surface Mount, Amber
G-STR-120-D-B	46KT80	120VAC, Ex d Surface Mount, Blue
G-STR-120-D-C	46KT81	120VAC, Ex d Surface Mount, Clear
G-STR-120-D-G	46KT82	120VAC, Ex d Surface Mount, Green
G-STR-120-D-M	46KT83	120VAC, Ex d Surface Mount, Magenta
G-STR-120-D-Y	46KT84	120VAC, Ex d Surface Mount, Yellow
G-STR-120-D-R	46KT85	120VAC, Ex d Surface Mount, Red
G-STR-230-D-A	46KT86	220-240VAC, Ex d Surface Mount, Amber
G-STR-230-D-B	46KT87	220-240VAC, Ex d Surface Mount, Blue
G-STR-230-D-C	46KT88	220-240VAC, Ex d Surface Mount, Clear
G-STR-230-D-G	46KT89	220-240VAC, Ex d Surface Mount, Green
G-STR-230-D-M	46KT90	220-240VAC, Ex d Surface Mount, Magenta
G-STR-230-D-Y	46KT91	220-240VAC, Ex d Surface Mount, Yellow
G-STR-230-D-R	46KT92	220-240VAC, Ex d Surface Mount, Red
G-STR-024-T-A	46KT93	24VDC, Ex d U-Bracket Mount*, Amber
G-STR-024-T-B	46KT94	24VDC, Ex d U-Bracket Mount*, Blue
G-STR-024-T-C	46KT95	24VDC, Ex d U-Bracket Mount*, Clear
G-STR-024-T-G	46KT96	24VDC, Ex d U-Bracket Mount*, Green
G-STR-024-T-M	46KT97	24VDC, Ex d U-Bracket Mount*, Magenta
G-STR-024-T-Y	46KT98	24VDC, Ex d U-Bracket Mount*, Yellow
G-STR-024-T-R	46KT99	24VDC, Ex d U-Bracket Mount*, Red
G-STR-120-T-A	46KU01	120VAC, Ex d U-Bracket Mount*, Amber
G-STR-120-T-B	46KU02	120VAC, Ex d U-Bracket Mount*, Blue
G-STR-120-T-C	46KU03	120VAC, Ex d U-Bracket Mount*, Clear
G-STR-120-T-G	46KU04	120VAC, Ex d U-Bracket Mount*, Green
G-STR-120-T-M	46KU05	120VAC, Ex d U-Bracket Mount*, Magenta
G-STR-120-T-Y	46KU06	120VAC, Ex d U-Bracket Mount*, Yellow
G-STR-120-T-R	46KU07	120VAC, Ex d U-Bracket Mount*, Red
G-STR-230-T-A	46KU08	220-240VAC, Ex d U-Bracket Mount*, Amber
G-STR-230-T-B	46KU09	220-240VAC, Ex d U-Bracket Mount*, Blue
G-STR-230-T-C	46KU10	220-240VAC, Ex d U-Bracket Mount*, Clear
G-STR-230-T-G	46KU11	220-240VAC, Ex d U-Bracket Mount*, Green
G-STR-230-T-M	46KU12	220-240VAC, Ex d U-Bracket Mount*, Magenta
G-STR-230-T-Y	46KU13	220-240VAC, Ex d U-Bracket Mount*, Yellow
G-STR-230-T-R	46KU14	220-240VAC, Ex d U-Bracket Mount*, Red

\*Field Installation Required



Ex d Surface Mount



Ex d U-Bracket Mount\*

## Global Series LED

- 50,000 hour LED array
- 8 user-configurable flash patterns
- 3 selectable pattern speeds (60, 75 or 90 RPM/FPM)
- Non-metallic, corrosion-resistant design
- IP66 enclosure

Federal Signal Model	Item Number	Description
G-LED-AC-D-A	46KU15	120-240VAC, Ex d Surface Mount, Amber
G-LED-AC-D-B	46KU16	120-240VAC, Ex d Surface Mount, Blue
G-LED-AC-D-C	46KU17	120-240VAC, Ex d Surface Mount, Clear
G-LED-AC-D-G	46KU18	120-240VAC, Ex d Surface Mount, Green
G-LED-AC-D-M	46KU19	120-240VAC, Ex d Surface Mount, Magenta
G-LED-AC-D-Y	46KU20	120-240VAC, Ex d Surface Mount, Yellow
G-LED-AC-D-R	46KU21	120-240VAC, Ex d Surface Mount, Red
G-LED-AC-T-A	46KU22	120-240VAC, Ex d U-Bracket Mount*, Amber
G-LED-AC-T-B	46KU23	120-240VAC, Ex d U-Bracket Mount*, Blue
G-LED-AC-T-C	46KU24	120-240VAC, Ex d U-Bracket Mount*, Clear
G-LED-AC-T-G	46KU25	120-240VAC, Ex d U-Bracket Mount*, Green
G-LED-AC-T-M	46KU26	120-240VAC, Ex d U-Bracket Mount*, Magenta
G-LED-AC-T-Y	46KU27	120-240VAC, Ex d U-Bracket Mount*, Yellow
G-LED-AC-T-R	46KU28	120-240VAC, Ex d U-Bracket Mount*, Red
G-LED-DC-D-A	46KU29	24VDC, Ex d Surface Mount, Amber
G-LED-DC-D-B	46KU30	24VDC, Ex d Surface Mount, Blue
G-LED-DC-D-C	46KU31	24VDC, Ex d Surface Mount, Clear
G-LED-DC-D-G	46KU32	24VDC, Ex d Surface Mount, Green
G-LED-DC-D-M	46KU33	24VDC, Ex d Surface Mount, Magenta
G-LED-DC-D-Y	46KU34	24VDC, Ex d Surface Mount, Yellow
G-LED-DC-D-R	46KU35	24VDC, Ex d Surface Mount, Red
G-LED-DC-T-A	46KU36	24VDC, Ex d U-Bracket Mount*, Amber
G-LED-DC-T-B	46KU37	24VDC, Ex d U-Bracket Mount*, Blue
G-LED-DC-T-C	46KU38	24VDC, Ex d U-Bracket Mount*, Clear
G-LED-DC-T-G	46KU39	24VDC, Ex d U-Bracket Mount*, Green
G-LED-DC-T-M	46KU40	24VDC, Ex d U-Bracket Mount*, Magenta
G-LED-DC-T-Y	46KU41	24VDC, Ex d U-Bracket Mount*, Yellow
G-LED-DC-T-R	46KU42	24VDC, Ex d U-Bracket Mount*, Red

\*Field Installation Required



Ex d Surface Mount



Ex d U-Bracket Mount\*

## Global Series Loudspeaker

- Available in 70 or 100Vrms
- Produces 96dB @ 10'
- 5 remotely selectable tap settings
- Non-metallic, corrosion-resistant design
- IP66 enclosure

Federal Signal Model	Item Number	Description
G-SPK-070-D	46KU43	Loudspeaker 70 Vrms, Ex d Surface Mount
G-SPK-070-T	46KU44	Loudspeaker 70 Vrms, Ex d U-Bracket Mount*
G-SPK-100-D	46KU45	Loudspeaker 100 Vrms, Ex d Surface Mount
G-SPK-100-T	46KU46	Loudspeaker 100 Vrms, Ex d U-Bracket Mount*



Ex d Surface Mount

## Global Series Sounder

- Multi-voltage design supports 3 operational voltages
- 15 Watt design
- Produces 98dB @ 10'
- Non-metallic, corrosion-resistant design
- IP66 enclosure

Federal Signal Model	Item Number	Description
G-SND-MV-D	46KU47	Sounder, Multi-Voltage, Ex d Surface Mount
G-SND-MV-T	46KU22	Sounder, Multi-Voltage, Ex d U-Bracket Mount*



Ex d U-Bracket Mount\*

## Global Series Amplified Speaker

- Multi-voltage design supports 3 operational voltages
- Produces 96dB @ 10'
- Internal gain control
- Non-metallic, corrosion-resistant design
- IP66 enclosure

Federal Signal Model	Item Number	Description
G-SPA-MV-D	46KU49	Amplified Speaker 120-240VAC, Ex d Surface Mount
G-SPA-MV-T	46KU50	Amplified Speaker 120-240VAC, Ex d U-Bracket Mount*

## Global Series Accessories

Federal Signal Model	Item Number	Description
G-KIT-RP-B	46KU54	Indicator Ring and Legend Plate Kit, Blue
G-KIT-RP-BK	46KU53	Indicator Ring and Legend Plate Kit, Black
G-KIT-RP-G	46KU52	Indicator Ring and Legend Plate Kit, Green
G-KIT-RP-M	46KU51	Indicator Ring and Legend Plate Kit, Magenta
G-KIT-RP-R	46KU57	Indicator Ring and Legend Plate Kit, Red
G-KIT-RP-Y	46KU55	Indicator Ring and Legend Plate Kit, Yellow
G-KIT-ST	46KU56	Single U-Bracket Mounting Kit*



**G-KIT-RP-\***  
Indicator Ring and Legend Plate Kit  
Kit includes one (1) indicator ring, one (1) legend plate, and associated hardware



**G-KIT-ST –**  
Single U-Bracket Mounting Kit\*  
includes one (1) single U-Bracket, two (2) U-Bracket side mounts and associated hardware. It is compatible with all “Ex d” units.

\*Field Installation Required

For additional product information, visit [www.grainger.com](http://www.grainger.com)

## 27XL Explosion-Proof LED

- Available in two lens colors
- Flashing or steady-burn LED
- Mount ordered separately
- Rated for Class I, Division 1; Class I, Division 2; and Class III; Type 4X, IP66
- UL and cUL Listed; Marine Listed



Pendant Mount  
PMXC-SB  
40JZ76



Ceiling Mount  
CMXC-SB  
40JZ77



Wall Mount  
WMXC-SB  
40JZ78



Dome Guard  
DGXC-SB  
40JZ79



Shown with  
pendant mount

Federal Signal Model	Item Number	Description
27XL-024A-MOD	1TAH6	Explosion-proof LED light, 24VDC, Amber
27XL-024R-MOD	1TAH5	Explosion-proof LED light, 24VDC, Red
27XL-120-240A-MOD	1TAH8	Explosion-proof LED light, 120-240VAC, Amber
27XL-120-240R-MOD	1TAH7	Explosion-proof LED light, 120-240VAC, Red

## 225XL Electraray® Hazardous Location LED Flashing

- Available in two lens/lamp colors
- Flashing mode standard, configurable to steady-burn
- 1/2" NPT pipe mount
- Rated for Class I, Division 2; Class II, Division 2; and Class III; Type 4X, IP66
- UL and cUL Listed; Marine Rated

Federal Signal Model	Item Number	Description
225XL-024A	1TAF7	Hazardous location flashing LED light, 24VDC, Amber
225XL-024R	1TAF6	Hazardous location flashing LED light, 24VDC, Red
225XL-120-240A	1TAF9	Hazardous location flashing LED light, 120-240VAC, Amber
225XL-120-240R	1TAF8	Hazardous location flashing LED light, 120-240VAC, Red



## 191XL Flashing LED Hazardous Location

- Available in two lens/lamp colors
- Flashing mode standard, configurable to steady-burn
- 3/4" NPT pipe mount or surface mount options with included dome guard
- Rated for Class I, Division 2; Class II, Division 1; and Class III; Type 4X, IP66
- UL and cUL Listed; Marine Rated

Federal Signal Model	Item Number	Description
191XL-024A	1TAH2	Hazardous location flashing LED light, 3/4" NPT pipe mount, 24VDC, Red
191XL-024R	1TAH1	Hazardous location flashing LED light, 3/4" NPT pipe mount, 24VDC, Red
191XL-120-240R	1TAH4	Hazardous location flashing LED light, 3/4" NPT pipe mount, 120-240VAC, Amber
191XL-S120-240A	48Z705	Hazardous location flashing LED light, surface mount, 120-240VAC, Amber
191XL-120-240R	1TAH3	Hazardous location flashing LED light, 3/4" NPT pipe mount, 120-240VAC, Red
191XL-S120-240R	48Z706	Hazardous location flashing LED light, surface mount, 120-240VAC, Red



Surface Mount



## AV1-LED LED Flashing Combination Audible/Visual Signal

- 120VAC
- Internal buzzer produces 85dBA @ 10'
- Surface mount, 1/2" NPT pipe mount and 4" electrical box mount
- Type 3R enclosure
- UL and cUL Listed

Federal Signal Model	Item Number	Description
AV1-LED-120R	48Z712	Audible/visual combination signal, 120VAC, Red
AV1-LED-120A	48Z711	Audible/visual combination signal, 120VAC, Amber



## 371LED Commander® LED Rotating Warning Light

- 120VAC
- Pivoting lamp yoke
- Heavy duty die-cast housing
- Type 4X, IP66 enclosure
- UL and cUL Listed

Federal Signal Model	Item Number	Description
371LED-120R	1N747	Heavy-duty rotating LED light, 120VAC, Red
371LED-120A	1N748	Heavy-duty rotating LED light, 120VAC, Amber



## 121S Vitalite® Rotating Warning Light

- 40 watt incandescent lamp
- 120VAC
- 1/2" pipe or surface mount
- Type 4X, IP66 enclosure
- UL and cUL Listed; CSA Certified

Federal Signal Model	Item Number	Description
121S-120R	4A961	Rotating incandescent light, 120VAC, Red
121S-120A	4A962	Rotating incandescent light, 120VAC, Amber



## LP7 StreamLine® Low Profile Combination Sounder/Strobe

- Mini sounder with a fully integrated xenon strobe circuit
- 82-100dB @ 10' (tone dependent) with volume control
- 60FPM
- NEMA Type 4X, IP54
- CE Compliant

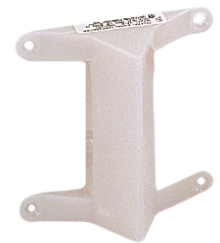
Federal Signal Model	Item Number	Description
LP7-18-30A	3WU56	Low profile audible/visual combination, 18-30VDC, Amber
LP7-18-30R	3WU57	Low profile audible/visual combination, 18-30VDC, Red



## VALS Visalert® Strobe

- Available in 120VAC
- Clear and red lens options
- 4,000 hour strobe tube
- Flush or surface mount
- Type 3R, IP44 enclosure

Federal Signal Model	Item Number	Description
VALS-120C	1N741	Flush mount strobe, 120VAC, Clear
VALS-120R	1N740	Flush mount strobe, 120VAC, Red



## LP1 StreamLine® Low Profile Mini Strobe

- Available in 12VDC, 24VDC & 120VAC
- Surface mount
- Low profile 2.6" H x 2.3" W x 5.0" L
- Type 4X, IP66 enclosure
- UL and cUL Listed

Federal Signal Model	Item Number	Description
LP1-120G	4RM45	Low-profile mini strobe, 120VAC, Green
LP1-120R	4RM46	Low-profile mini strobe, 120VAC, Red



## 141ST Electraflash® Strobe

- Available in 12VDC, 24VDC & 120VAC
- Available in 2 lens colors
- 1/2" NPT pipe or surface mount
- Type 3R enclosure
- UL Listed; CSA Certified

Federal Signal Model	Item Number	Description
141ST-012R	3T943	Strobe warning light, 12VDC, Red
141ST-012A	3T944	Strobe warning light, 12VDC, Amber
141ST-024R	3T945	Strobe warning light, 24VDC, Red
141ST-024A	3T946	Strobe warning light, 24VDC, Amber
141ST-120R	3T947	Strobe warning light, 120VAC, Red
141ST-120A	3T948	Strobe warning light, 120VAC, Amber



## BPL26ST Battery Powered Strobe

- 12VDC
- Uses two standard 6VDC lantern batteries
- Available in 2 dome colors
- Magnetic Mount
- Type 3R weatherproof enclosure

Federal Signal Model	Item Number	Description
BPL26ST-A	5WF83	Battery powered strobe warning light, 12VDC, Amber



## FB2PST Fireball® Strobe

- 120VAC
- Available in 2 lens colors
- 1/2" NPT pipe or surface mount
- Type 4X, IP66 enclosure
- UL and cUL Listed; CSA Certified

Federal Signal Model	Item Number	Description
FB2PST-120R	4A963	Strobe warning light, 120VAC, Red
FB2PST-120A	4A964	Strobe warning light, 120VAC, Amber



## StreamLine® Low Profile Strobe

- Available in 24VDC or 120VAC
- Available in 3 lens colors
- Surface, Edison & 1/2" NPT pipe mount options
- Type 4X, IP66 enclosure
- UL and cUL Listed; CSA Certified

Federal Signal Model	Item Number	Description
LP3E-120A	5WF84	Low profile strobe warning light, edison mount, 120VAC, Amber
LP3E-120R	5WF85	Low profile strobe warning light, edison mount, 120VAC, Red
LP3M-012-048A	5WF86	Low profile strobe warning light, male pipe mount, 12-48VDC, Amber
LP3M-012-048G	5WF87	Low profile strobe warning light, male pipe mount, 12-48VDC, Green
LP3M-012-048R	5WF88	Low profile strobe warning light, male pipe mount, 12-48VDC, Red
LP3M-120A	5WF89	Low profile strobe warning light, male pipe mount, 120VAC, Amber
LP3M-120G	5WF90	Low profile strobe warning light, male pipe mount, 120VAC, Green
LP3M-120R	5WF91	Low profile strobe warning light, male pipe mount, 120VAC, Red
LP3P-120A	5WF92	Low profile strobe warning light, pipe mount, 120VAC, Amber
LP3P-120R	5WF93	Low profile strobe warning light, pipe mount, 120VAC, Red
LP3T-012-048A	5WF94	Low profile strobe warning light, T-mount, 12-48VDC, Amber
LP3T-012-048R	5WF95	Low profile strobe warning light, T-mount, 12-48VDC, Red



## 131DST Starfire® Strobe

- 120VAC
- Available in 2 dome colors
- Single or double flash strobe
- Type 3R, IP45 enclosure
- UL and cUL Listed; CSA Certified

Federal Signal Model	Item Number	Description
131DST-120R	4A965	Double flash strobe, 120VAC, Red
131DST-120A	4A966	Double flash strobe, 120VAC, Amber



## 225XST Electraray® Hazardous Location Strobe

- 120VAC
- Available in 2 lens colors
- 1/2" NPT pipe mount
- Rated for Class I, Div 2; Class II, Div 2; Class III; Type 4X, IP66 enclosure
- UL and cUL Listed; CSA Certified

Federal Signal Model	Item Number	Description
225XST-120R	1N900	Hazardous location strobe, 120VAC, Red
225XST-120A	1N902	Hazardous location strobe, 120VAC, Amber



## Mounting Bracket

- Heavy-duty construction with easy installation
- For walls and outside corners
- 1/2-inch, 3/4-inch and 1-inch pipe mount
- Indoor and outdoor use
- Type 3R

Federal Signal Model	Item Number	Description
LWMB2	5T588	Hazardous location light mounting bracket

Light sold separately



## 27XST Explosion-Proof Strobe

- Available in 24VDC and 120VAC
- Available in two lens colors
- Mount ordered separately
- Rated for Class I, Div 1; Class I, Div 2; Class II, Div 1; Class III; Type 4X, IP66 enclosure
- UL and cUL Listed; CSA Certified; CSFM Approved; Marine Rated



Pendant Mount  
PMXC-SB  
40JZ76



Ceiling Mount  
CMXC-SB  
40JZ77



Wall Mount  
WMXC-SB  
40JZ78



Dome Guard  
DGXC-SB  
40JZ79

Federal Signal Model	Item Number	Description
27XST-024C-MOD	23TP34	Explosion-proof strobe, 24VDC, Clear
27XST-024R-MOD	23TP33	Explosion-proof strobe, 24VDC, Red
27XST-120A-MOD	23TP32	Explosion-proof strobe, 120VAC, Amber
27XST-120R-MOD	23TP31	Explosion-proof strobe, 120VAC, Red



Shown with  
pendant mount

## LP6 StreamLine® Low Profile Mini Strobe

- 12-48VDC
- Available in 2 dome colors
- Low profile: 3 5/8" H
- Type 4X enclosure
- UL and cUL Listed; CSA Certified

Federal Signal Model	Item Number	Description
LP6-012-048A	5WF96	Low profile mini strobe, 12-48VDC, Amber
LP6-012-048R	5WF97	Low profile mini strobe, 12-48VDC, Red



## 151XST Hazardous Location Strobe Warning Light

- Available in 12-24VDC, 120VAC & 240VAC
- Available in two lens colors
- 3/4" NPT pipe or surface mount
- Type 4X, IP66 enclosure
- UL and cUL Listed; CSA Certified; Marine Rated

Federal Signal Model	Item Number	Description
151XST-120R	1N754	Hazardous location strobe, pipe mount, 120VAC, Red
151XST-S120R	48Z702	Hazardous location strobe, surface mount, 120VAC, Red
151XST-120A	1N755	Hazardous location strobe, pipe mount, 120VAC, Amber
151XST-S120A	48Z701	Hazardous location strobe, surface mount, 120VAC, Amber



3/4" NPT  
Pipe Mount



Surface Mount

# Status Indicators

## LSL Litestak®

- LED or incandescent models
- Larger profile - 3.93" diameter
- Surface or integrated 3/4" NPT pipe mount
- NEMA Type 1 enclosure
- UL & cUL Listed; CSA Certified

Federal Signal Model	Item Number	Description
<b>BASES</b>		
LSB-120	3T949	Standard base
LSBS	1N896	Surface mount base
<b>LIGHT MODULES</b>		
LSL-120A	3T950	Light module, incandescent, 120VAC, Amber
LSL-120B	3T951	Light module, incandescent, 120VAC, Blue
LSL-120C	3T952	Light module, incandescent, 120VAC, Clear
LSL-120G	3T953	Light module, incandescent, 120VAC, Green
LSL-120R	3T954	Light module, incandescent, 120VAC, Red
LSDL-120A	3WU45	Light module, LED, 120VAC, Amber
LSDL-120B	3WU46	Light module, LED, 120VAC, Blue
LSDL-120C	3WU47	Light module, LED, 120VAC, Clear
LSDL-120G	3WU48	Light module, LED, 120VAC, Green
LSDL-120R	3WU49	Light module, LED, 120VAC, Red
<b>HORNS</b>		
LSH-120	4RM47	Sound module, horn, 120VAC



## SCB SemiStat®

- Tri or quad-color models available
- Adjustable sequence of LED light modules
- 60 flashes per minute
- Integrated sounder with volume control produces 60dB @ 10'
- Surface mount

Federal Signal Model	Item Number	Description
SCB-024QC	5LE18	Quad color status indicator with sounder, 24VDC
SCB-024TC	5LE19	Tri color status indicator with sounder, 24VDC



## MSL MicroStat®

- 3 lights/5 lens colors provided (amber, blue, clear, green & red)
- Quick and easy lens restacking
- Surface or integrated 3/4" NPT pipe mount
- NEMA Type 4X enclosure
- UL & cUL Listed

Federal Signal Model	Item Number	Description
MSL3-024	2YE22	Three tier status indicator, 24VDC
MSL3-120	3WU58	Three tier status indicator, 120VAC



## USI UniStat®

- Tri-color LED module produces Amber, Green & Red
- Four integrated flash patterns
- NEMA Type 4X, IP66 enclosure
- A total of 12 flash/color combinations for attention getting
- UL & cUL Listed

Federal Signal Model	Item Number	Description
USI-120TC	3WU50	Single unit, tri-color status indicator, 120VAC



116

8SS544

For additional product information, visit [www.grainger.com](http://www.grainger.com)

When you enter a corrosive atmosphere area with high noise levels, extreme temperatures, dust and humidity, Federal Signal offers a wide array of audible signal solutions.

## 450E Vibratone® Electronic Horn

- Coded or sustained tones
- No duty cycle or interval limitations
- Produces 99dBA at 10' on axis
- Four wire terminal block and supervisory diode
- UL and cUL Listed; ULC Listed; CSFM Listed; Marine Rated

Federal Signal Model	Item Number	Description
450E-024	35GX51	Electronic horn, 16-33VDC or 12-24VDC, Gray



## 350 Vibratone® Horn

- Available in 120VAC
- Produces coded blast or sustained tones
- Produces 100dBA @ 10'
- Surface, flush or semi-flush mounting
- UL and cUL Listed; CSA Certified; FM Approved

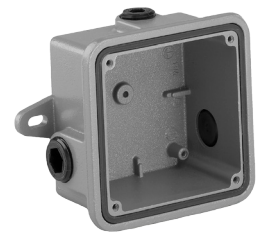
Federal Signal Model	Item Number	Description
350-120-30	4A967	Mechanical horn, 120VAC, Gray



## Weatherproof Back Box

- Cast-aluminum gasketed box
- Complete with mounting lugs and threaded conduit openings
- For weatherproof/outdoor mounting
- Surface mount applications
- For use with 4A967 horn, 1N742 siren, 5LE20 speaker amplifier and 5T589 bells

Federal Signal Model	Item Number	Description
WB	4A969	Weatherproof backbox accessory



## Flush-Mount Trim Ring

- Cast-aluminum gasketed box
- Complete with mounting lugs and threaded conduit openings
- For weatherproof/outdoor mounting
- Surface mount applications
- For use with 4A967 horn, 1N742 siren, 5LE20 speaker amplifier and 5T589 bells

Federal Signal Model	Item Number	Description
TR	5LE17	Flush-mount trim ring accessory



## Vibratone® Bells

- Available in 4" and 6" gong sizes
- Mounts on standard outlet box
- Produces 98-100dBA @ 10'
- Outdoor applications use 4A969 weatherproof box
- UL and cUL Listed; CSA Certified; FM Approved

Federal Signal Model	Item Number	Description
504WB-120	4A960	Vibrating bell, 4-inch gong, 120VAC, Gray
506WB-120	5T589	Vibrating bell, 6-inch gong, 120VAC, Gray



## Telephone Extension Ringers

- Draws attention to ringing phone in high noise areas
- Activated by ringing signal of an analog phone
- Die-cast aluminum housing and gray powder coat paint
- 3LY37 contains a vibrating bell signal
- 3LY38 contains a vibrating horn signal

Federal Signal Model	Item Number	Description
TELB	3LY37	Telephone extension ringer, vibrating bell signal, 120VAC
TELB	3LY38	Telephone extension ringer, vibrating horn signal, 120VAC



## 50GC SelecTone® Audible Signaling Device

- Produces crisp, clear tones, digital voice and live public address
- Built-in gain control adjustable between 64dBA to 88dBA @ 10'
- Flush or surface mount
- Type 3R enclosure
- UL and cUL Listed; CSFM Approved

Federal Signal Model	Item Number	Description
50GC-120BG	5LE20	Audible signaling device, 120VAC, White



## SelecTone® Speaker/Amplifier

- Self-amplified, solid-state signal device with gain control
- Produces up to 110dBA @ 10'
- Requires one tone module (1N894 ordered separately)
- Type 3R enclosure
- UL and cUL Listed; CSFM Approved

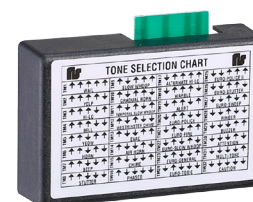
Federal Signal Model	Item Number	Description
300GC-120	4A968	Self-amplified speaker/amplifier, 120VAC, Gray



## SelecTone® Universal Tone Module

- For exclusive use with SelecTone modules
- Micro-controller based tone generator
- Plug-in installation
- Capable of producing any one of 32 different tones
- For use with 4A968, 3WU52, 3WU53 and 5LE20 audible signals

Federal Signal Model	Item Number	Description
UTM	1N894	Universal tone module for use with SelecTone models



## Hazardous Location SelecTone® Speaker/Amplifier

- Available in 24VDC or 120VAC
- Built in gain control, adjustable between 0dBA to 110dBA @ 10'
- Requires one tone module (1N894 ordered separately)
- Class I, Division 2; Class II, Division 2; and Class III rated
- UL and cUL Listed; CSFM Approved

Federal Signal Model	Item Number	Description
300GCX-024	3WU52	Hazardous location amplified speaker, 24VDC, Gray
300GCX-120	3WU53	Hazardous location amplified speaker, 120VAC, Gray



## Hazardous Location Vibrating Horn

- Available in 120VAC
- Produces coded or sustained tones
- Produces 100dBA @ 10"
- Rated for Class I, Division 2; Class II, Division 2; and Class III; Type 4X enclosure
- UL and cUL Listed; CSA Certified

Federal Signal Model	Item Number	Description
350WBX-120	3WU54	Hazardous location vibrating horn, 120VAC, Black



## Explosion-Proof Electronic Siren

- Multi-voltage design accepts 24VDC, 120VAC or 240VAC
- Produces one of four tones - wail, yelp, horn and temporal slow whoop
- Produces 101-108dBA @ 10'
- Class I, Division 1 rated; NEMA 4X, IP66
- UL and cUL Listed

Federal Signal Model	Item Number	Description
SSTX-MV	3WU51	Explosion-proof electronic siren, 120VAC, Gray



## Explosion-Proof Vibrating Horn

- 120VAC
- Corrosion-resistant cast aluminum housing
- Produces 100dBA @ 10'
- Rated for Class I, Division 1; Class II, Division 1; and Class III
- UL and cUL Listed; CSA Certified

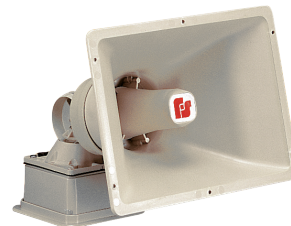
Federal Signal Model	Item Number	Description
31X-120-3	1N749	Explosion-proof vibrating horn, 120VAC, Gray



## SST-MV Electronic Siren

- Multi-voltage design accepts 24VDC and 120-240VAC
- Produces one of four tones - wail, yelp, horn and temporal slow whoop
- Produces 107-111dBA @ 10'
- Omni-directional swivel mount
- UL and cUL Listed

Federal Signal Model	Item Number	Description
SST-MV	1N742	Electronic siren, multi-voltage design, Gray



## 55 Resonating Horn

- 120VAC
- Resonated column of air generates sound
- Produces 105dBA @ 10' (115dBA @ 1m)
- Indoor/outdoor use
- UL Listed; CSA Certified; FM Approved

Federal Signal Model	Item Number	Description
55-120-1	1N745	Resonating horn, 120VAC, Gray



# Hazardous Location Wall Mount Intercoms

## AD-27AC

- Master control function
- Integrated talk/listed switch, volume control and call button
- Produces 100dBA
- Cast aluminum housing
- NEMA 4X, IP65

Federal Signal Model	Item Number	Description
AD-27AC	2GUC2	Heavy-duty industrial intercom, 120VAC, Gray



## AD-27AD

- Intercom/speaker unit
- Integrated talk/listed switch, volume control and call button
- Produces 100dBA
- Cast aluminum housing
- NEMA 4X, IP65

Federal Signal Model	Item Number	Description
AD-27AD	2GUC3	Heavy-duty industrial intercom, 120VAC, Gray



## AD-27SA-25

- 25 Watt
- Amplified speaker
- Integrated talk/listed switch, volume control and call button
- Cast aluminum housing
- NEMA 4X, IP65

Federal Signal Model	Item Number	Description
AD-27SA-25	3YML6	Amplified speaker, 120VAC, Gray



# Vehicular Exterior Mount/Perimeter Warning Lights

## MicroPulse™ Ultra 3

- Super low-profile design offers wide range of mounting options
- Superior warning with (3) high-powered LEDs
- (18) selectable flash patterns
- Single/multi-unit synchronization
- 12/24 VDC
- Class 1 approved

Federal Signal Model	Item No.	Description
MPS300U-A	45TN65	3-LED lighthouse, Amber
MPS300U-R	45TN68	3-LED lighthouse, Red



## MicroPulse™ Ultra 6

- Super low-profile design offers wide range of mounting options
- Superior warning with (6) high-powered LEDs
- (19) selectable flash patterns
- Single/multi-unit synchronization
- 12/24 VDC
- Class 1 approved

Federal Signal Model	Item No.	Description
MPS600U-AA	45TN69	6-LED lighthouse, Amber/Amber
MPS600U-WW	45TN71	6-LED lighthouse, White/White
MPS600U-RA	45TN72	6-LED lighthouse, Red/Amber



## MicroPulse™ Ultra 12

- Super low-profile design offers wide range of mounting options
- Superior warning with (12) high-powered LEDs
- (25) selectable flash patterns
- Single/multi-unit synchronization
- 12/24 VDC
- Class 1 approved

Federal Signal Model	Item No.	Description
MPS1200U-AA	45TN60	12-LED lighthouse, Amber/Amber
MPS1200U-WA	45TN63	12-LED lighthouse, White/Amber
MPS1200U-RR	45TN64	12-LED lighthouse, Red/Red



## MicroPulse™ Ultra Dual

- Super low-profile design offers wide range of mounting options
- Superior warning with (12) high-powered LEDs
- (18) selectable flash patterns
- Single/multi-unit synchronization
- Flash as a solid or dual color lighthouse
- 12/24 VDC
- Class 1 approved

Federal Signal Model	Item No.	Description
MPS620U-WA	45TN74	12-LED lighthouse, (6) White/ (6) Amber
MPS620U-RA	45TN77	12-LED lighthouse, (6) Red/ (6) Amber



## MicroPulse™ Flashing/Marker

- Super low-profile design offers wide range of mounting options"
- FVMSS marker light and warning light in one solution
- Single/multi-unit synchronization
- 12/24 VDC
- Warning side Class 2 approved

Federal Signal Model	Item No.	Description
MPS600M-RA	45TN80	(3) LED Red marker light, (3) LED Amber flashing
MPS600M-AA	45TN81	(3) LED Amber marker light, (3) LED Amber flashing



## MicroPulse™ Wide Angle

- Utilizes (9) LEDs; 180-degree light spread
- (12) flash patterns
- Synchronizes with other MicroPulse products
- 12/24 VDC
- Class 1 approved

Federal Signal Model	Item No.	Description
MPSW9-A	35ZX45	9-LED lighthouse, Amber
MPSW9-R	35ZX42	9-LED lighthouse, Red
MPSW9-W	35ZX44	9-LED lighthouse, White



## SignalTech® LED Lights

- Sealed wiring harness
- Random, alternating or synchronous flash patterns
- 12/24 VDC (all units operate at 9 to 32 VDC)
- Marker Lights: 12 VDC only
- S/T/T and back-up/turn: FMVSS 108 compliant, SAE J1398, and SAE J593

Federal Signal Model	Item No.	Description
<b>Random flashing LED Light Kits, 12-24VDC, 71 quad FPM</b>		
607123-02SB	45TN85	4" Round LED light kit, PAR 36, Amber
607101-02SB	45TN84	6" Oval LED light kit, Amber
<b>S/T/T and Back-up lights – 4" Round LED light kits</b>		
607100-04SB	45TN82	LED Stop/Tail/Turn light, 12-24V, Red
607102-02SB	45TN86	LED turn light, 12-24V, Amber
607124-05SB	45TN88	LED back-up light, 12-24V, White
<b>S/T/T and Back-up lights – 6" Oval LED light kits</b>		
607105-04SB	45TN83	LED Stop/Tail/Turn light, 12-24V, Red
607106-02SB	45TN87	LED turn light, 12-24V, Amber
607125-05SB	45TN89	LED back-up light, 12-24V, White
Kits include LED light, rubber mounting grommet, sealed wire harness		



## Directional Warning Lights

### Latitude™ SignalMaster™

- Innovative co-extrusion, polycarbonate housing provides moisture resistance
- Left, Right and Center-out warning
- Controller included
- 12.8 VDC
- Class 1 approved

Federal Signal Model	Item No.	Description
SL6S-A	35ZX57	24.2", (6) Amber LED reflectors, SignalMaster Controller
SL8S-A	35ZX58	31.6", (8) Amber LED reflectors, SignalMaster Controller
"SL8S-A48	45TN99	48", (8) Amber LED reflectors, SignalMaster Controller



## HighLighter™ LED

- Highly effective 360-degree of light output
- Low-profile, only 2.7" tall; 15" long
- (23) selectable flash patterns using MagnetSelect™ key chain, sold separately
- Superior warning with (26) high-powered LEDs
- 12 VDC
- Class 1 approved

Federal Signal Model	Item No.	Description
454100HL-02	35GX16	Amber LEDs/Amber dome, Suction-cup magnet mount with cigarette plug
454101HL-02	35GX18	Amber LEDs/Amber dome, Permanent mount
454102HL-02	35GX20	Amber LEDs/Amber dome, Magnetic mount with cigarette plug



## HighLighter™ LED Plus

- Highly effective 360-degrees of light output
- Low-profile, only 2.7" tall; 15" long
- (23) selectable flash patterns using MagnetSelect™ key chain, included
- Superior warning with (36) high-powered LEDs
- 12 VDC
- Class 1 approved

Federal Signal Model	Item No.	Description
454200HL-02	35GX22	Amber LEDs/Amber dome, Suction-cup magnet mount with cigarette plug
454201HL-02	35GX24	Amber LEDs/Amber dome, Permanent mount
454202HL-02	35GX28	Amber LEDs/Amber dome, Magnetic mount with cigarette plug



# Beacons

## UltraStar® LED

- LED technology for zero maintenance lighting; no bulbs or strobe tubes to replace
- Die-cast aluminum permanent/1-inch pipe mount base
- (14) selectable flash patterns
- 12/24 VDC
- Class 1 approved

Federal Signal Model	Item No.	Description
252650-02SC	39F807	Amber dome, Permanent mount
252651-02SC	12Y108	Amber dome, Magnet mount with cigarette plug



## Pulsator® 551 LED

- LED technology for zero maintenance lighting; no bulbs or strobe tubes to replace
- (14) selectable flash patterns
- 12/24 VDC
- Tall dome
- Class 1 approved

Federal Signal Model	Item No.	Description
212660-02SB	45TN93	Amber dome, Permanent mount
212662-02SB	45TN94	Amber dome, Magnet mount with cigarette plug
212664-02SB	45TN96	Amber dome, Suction-cup magnet mount with cigarette plug



## Pulsator® 451 LED

- LED technology for zero maintenance lighting; no bulbs or strobe tubes to replace
- (14) selectable flash patterns
- 12/24 VDC
- Short dome
- Class 2 approved

Federal Signal Model	Item No.	Description
212670-02SB	35ZX11	Amber dome, Permanent mount
212672-02SB	35ZX12	Amber dome, Magnet mount with cigarette plug
212674-02SB	45TN90	Amber dome, Suction-cup magnet mount with cigarette plug



## Firebolt® LED, Class 2

- Polycarbonate dome and base
- (14) selectable flash patterns
- 12/24 VDC
- Class 2 approved

Federal Signal Model	Item No.	Description
220250-02	35ZX15	Amber dome, Permanent mount
220260-02	35ZX17	Amber dome, Magnet mount with cigarette plug



## Firebolt® LED, Class 3

- Polycarbonate dome and base
- Single flash pattern
- 12/24 VDC
- Class 3 approved

Federal Signal Model	Item No.	Description
220350-02	45TN91	Amber dome, Permanent mount
220360-02	45TN92	Amber dome, Magnet mount with cigarette plug



# Mobile Camera Systems

## Mobile Camera Systems

- All cameras are high-resolution, color Sony® CCD cameras
- Rear camera is equipped with automatic day/night sensor and infrared LEDs for night vision
- Park assist lines in monitor
- 12/24 VDC



Federal Signal Model	Item No.	Description
<b>MOBILE CAMERA SYSTEMS</b>		
CAMSET56-NTSC-2	12Y126	5.6" Monitor with two camera inputs, (1) standard rear-view camera, and (1) 65.5-ft camera-to-monitor extension cable
CAMSET70-NTSC4B	45TP12	7.0" Monitor with four camera inputs, intelligent split screen capability, (1) standard rear-view camera, and (1) 65.5-ft camera-to-monitor extension cable
<b>CAMERA SYSTEMS</b>		
CAMCCD-FL2SNTSC	45TP16	Bullet/flush-mount CCD camera with photosensor, 10 infrared LEDs for night vision, IP68
CAMCCD-SIDENTSC	45TP17	Side vehicle CCD camera with photosensor, 16 infrared LEDs and microphone, black
CAMCCD-REARNTSC	39F812	Standard rear-view CCD camera with photosensor, 16 infrared LEDs and microphone, black
<b>CABLES</b>		
CAMCABLE-5	45TP13	Camera-to-monitor extension cable, 16.5-ft/5-m
CAMCABLE-10	45TP14	Camera-to-monitor extension cable, 33-ft/10-m
CAMCABLE-20	45TP15	Camera-to-monitor extension cable, 65.5-ft/20-m

## Commander™ Series Work Lights

- High powered LED work light
- Effective flood light solution
- Adjustable vertical and horizontal mounts
- Stainless steel hardware kit and u-bracket included
- 12/24 VDC

Federal Signal Model	Item No.	Description
COM1200-RND	45TP06	1200 lumen, Round
COM1200-SQ	45TP07	1200 lumen, Square
COM750-RND	45TP04	750 lumen, Round
COM750-SQ	45TP05	750 lumen, Square



## Back-up Alarms

### Evacuator®

- Produces two distinct tones - pulse and constant on
- Impact resistant housing
- Designed for multi-volt operation
- Conforms with SAE J994 and OSHA requirements
- Universal mounting bracket

Federal Signal Model	Item No.	Description
210333	5UVN5	97 dB(A), 12-48VDC, SAE J994 Type C, nickel-plated threaded terminals



### 2012 Series Back-up Alarms

- Built-in universal mounting bracket (with industry-standard 3.25" centers)
- Alarms operate at 12-24 VDC drawing only 0.5 A
- Steam-cleanable and pressure washable
- Epoxy encapsulation protects against vibration, as well as debris and moisture ingress
- Meet SAE J994, CE, OSHA, and MSHA requirements

Federal Signal Model	Item No.	Description
<b>STUD TERMINAL MODELS</b>		
210238-S	35ZX60	87 dB(A), 12-24 VDC, SAE J994 Type D
210239-S	39F744	97 dB(A), 12-24 VDC, SAE J994 Type C
210240-S	39F745	102 dB(A), 12-24 VDC, SAE J994 Type F
<b>WIRE MODELS</b>		
210238-W	35ZX61	87 dB(A), 12-24 VDC, SAE J994 Type D
210239-W	35ZX62	97 dB(A), 12-24 VDC, SAE J994 Type C
210240-W	35zx63	102 dB(A), 12-24 VDC, SAE J994 Type F



# Enclosure Rating Reference Guide

## Nema Ratings

National Electrical Manufacturers Association

### Type Indicates:

**1 General Purpose, Indoor** — To prevent accidental contact of personnel with the enclosed equipment in areas where unusual service conditions do not exist. Provide protection against falling dirt.

**2 Drip-Proof, Indoor** — Similar to Type 1, but also protects against falling non-corrosive liquids and falling dirt. Drainage provisions provided.

**3 Dust-Tight, Rain-Tight, Sleet-Resistant, Outdoor** — Protected against wind-blown dust and water.

**3R Rainproof, Sleet-Resistant, Outdoor** — Protected against rain.

**3S Dust-Tight, Rain-Tight and Sleet-Proof, Outdoor** — Protected against windblown dust and water, remains operable when covered by external ice or sleet. (Not protected against internal icing.)

**4 Water-Tight and Dust-Tight, Indoor and Outdoor** — Protected against wind-blown dust and rain, splashing water, seepage water, falling or hose-directed water, and severe external condensation. Mountings are external to cavity.

**4X Water-Tight, Dust-Tight, Indoor and Outdoor** — Same as Type 4 but also corrosion-resistant. Passes 200-hr. salt spray (fog) test.

## IP Ratings

Ingress Protection

Prefix	First #	— Solids
IP	0	— No protection
IP	1	— Over 50mm
IP	2	— Over 12mm
IP	3	— Over 2.5mm
IP	4	— Over 1.0mm
IP	5	— Dust, limited ingress from all directions
IP	6	— Total protection against dust
Prefix	Second #	— Water
IP	0	— No protection
IP	1	— Dripping
IP	2	— Dripping when tilted up to 15°
IP	3	— Spraying when tilted up to 60°
IP	4	— Splashing
IP	5	— Low pressure jets
IP	6	— Strong jets

# How To Choose An Audible Signal

## Purpose Ambient Noise Coverage

*When choosing a signal for an application, remember the acronym PAC. If you determine a signal's PURPOSE, the AMBIENT NOISE of the environment and the area of COVERAGE that is needed, you will be able to fit the right device to your application.*

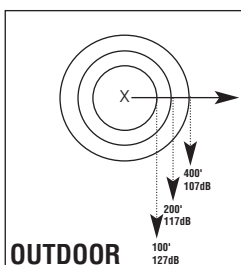
## Purpose

Determine whether the signal will be used for the monitoring of a process or for emergency notification (fire, chlorine leak, natural disasters). Study operational uses such as start/stop work, coded paging and voice messages. Also, the type of duty cycle (i.e. : time device is on vs. time off) will determine what device is best suited for a given application.

## Ambient Noise Coverage

Ambient noise levels and the frequency (low or high) are critical in determining the type of device to be recommended. Most facilities will have already recorded this information for OSHA compliance.

How big of an area is to be covered? Coverage requirements dictate the type(s) and number of devices that will be needed. A plot plan of the plant or a blueprint of the building can be very helpful in determining area of coverage, and help analyze what obstructions might be a factor in complete plant coverage.



## Measuring Sound

The following chart demonstrates the role distance plays in the "loudness" of an audible signal. Most of our devices are measured at a distance of 10 feet (on axis); Outdoor Warning Sirens are measured at 100ft. (on axis). This gives us a common point for comparison.

To understand the range of these devices, use a 6dB loss per distance, doubled for the regular devices and a 10dB loss per distance, doubled for outdoor sirens.

For example, a regular device produces 6dB less at a distance of 20' than at 10'. An outdoor warning device is 10dB less at 200' than at 100'.

**Alarm:** A signal for attracting attention to an event.

**Ambient Noise Level:** The level of acoustic noise existing at a given location, such as in a room, in a compartment or at a place outside.

**Amplifier:** An electronic component that boosts the voltage or power level of a signal.

**Beacon:** A device used to produce a visible indication of an event.

**Candela (cd):** The standard unit for luminous intensity.

**Crosshatch Lens:** The pattern of the plastic material of the lens that results in a brilliant illumination of the signal.

**Decibel (dB):** A unit used to convey the intensity of sound.

**Dip Switch:** Stands for Dual Inline Package switch, one of a set of small (sometimes very small) toggle switches on a circuit board that are used for configuring the device.

**Dome:** The top component of a visual signal—manufactured in various colors to create different color signals.

**Gain Control:** A device that adjusts the gain of an amplifier by altering the amount of negative feedback in the amplifying system.

Note: Not the same as volume control.

**Halogen Bulb:** A bulb filled with halogen gas, a substance that causes the particles of tungsten to be redeposited onto the tungsten filament. This process extends the lamp's life and also makes the light whiter and brighter.

**FM Approved:** FM stands for Factory Mutual, a third party approval and certification company that performs rigorous testing to specifications to ensure products meet or exceed their claims.

**Housing:** A protective cover designed to contain or support a light or horn. Often constructed of polycarbonate or die-cast aluminum.

**IP:** Is an international classification system to classify the Ingress Protection of an enclosure against solids and liquids as prescribed in the International Standard IEC 60529. For additional information on the IP classification system, see the Federal Signal product catalog or website.

**Incandescent Lamp:** A light source that uses electricity to heat up a filament until it gets so hot that it glows bright.

**Lamp:** A complete light source unit, usually consisting of a light generating element (arc tube or filament), support hardware, enclosing envelope and base.

**LED:** Stands for Light Emitting Diode. A diode designed to give off light when current flows through it.

**LED Lamp:** The bulb or tube portion of an electric lighting device.

**Low-Profile:** A signal that is short in physical size. A low profile signal might be used in a location with limited or small space.

**Lumen:** A unit of measurement quantifying the amount of light emitted from a light source.

**NEC:** National Electrical Code, developed and published by

the National Fire Protection Association. **NEMA:** National Electrical Manufacturers Association. NEMA provides a forum for the standardization of electrical equipment. See the Federal Signal product catalog or website for a complete listing of NEMA ratings.

**Nema Type 1:** Intended for use primarily to provide a degree of protection against limited amounts of falling dirt.

**Nema Type 3R:** Intended for outdoor use primarily to provide a degree of protection against rain, sleet and damage from external ice formation.

**Nema Type 4X:** Intended for indoor or outdoor use primarily to provide a degree of protection against corrosion, windblown dust and rain, splashing water, hose-directed water and damage from ice formation

**Parabolic Reflector:** A reflective device formed in a dish (concave) shape which helps produce a parallel light towards its focused direction.

**Polycarbonate:** An engineering plastic used to build housings; noted for its impact-, weather- and heat-resistant qualities.

**Powder Coat Finish:** A mixture of finely ground particles of pigment and resin which is then sprayed onto a surface and cured with a heat process. Powder coat finishes are attractive, high quality and resistant to chipping, scratching, UV damage and rust.

**SAE:** Society of Automotive Engineers, an organization that develops the standards to help advance mobility engineering.

**SAE Standard J845:** The standard for optical warning devices for emergency vehicles (single color, 360 degree lights).

**SAE Standard J994:** The standard for vehicle electric back-up alarm devices.

**SAE Standard J1318:** The standard for gaseous discharge warning lamp for authorized emergency, maintenance and service vehicles.

**Tone Output:** The sound that comes out of an electronic siren. Federal Signal products have various tones such as wail, yelp, whoop, voice tones and more.

**Rotating Light:** A continuous beam of light that rotates inside the housing.

**Status Indicator:** A signal used to indicate the status of an event, such as the startup of machinery.

**Strobe Light:** A device that emits a bright flashes of light at a timed rate. Strobe lights use xenon-gas tubes and are typically brighter than flashing lights.

**Tone:** Refers to the sound that emits from a horn. Federal Signal has products with various tone styles such as wail, yelp, whoop and more.

**UL:** Underwriters Laboratories Inc., an organization that tests products for public safety.

**cUL:** The Canadian approval given by Underwriters Laboratory that meet the safety standards for Canada.



*For more information contact your Grainger® Representative or visit [Grainger.com](http://Grainger.com)*